

# VertiCable®



Westbury® Aluminum Railings can turn your home into a welcoming retreat. VertiCable® offers contemporary vertical cables and balusters providing an architectural style and virtually unobstructed views. All sections are factory assembled, tensioned and shipped on pallets ready for quick installation.



- Railing Heights: 36", 42"
- Railing Lengths❖: 4', 5', 6', 7', 8'
- Factory Assembled Railing Kits
- 1/8" Stainless Steel Cable with Fasteners
- 5/8" Round Aluminum Balusters
- Adjustable Leveling Posts
- IBC Code approved aluminum post and railing
- Adjustable Gate & Hardware
- Limited Lifetime Warranty
- Warrantied Performance for Coastal Applications\*

## Powder Coating Colors

AAMA 2604



Gloss White



Black Fine Texture ★



Satin Black



Ninety Bronze



White Fine Texture



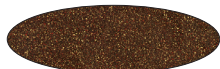
Gloss Beige



Brown Fine Texture



Bronze Fine Texture



Speckled Walnut



Chocolate

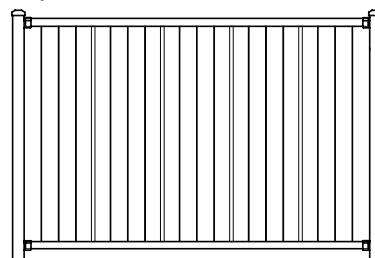


Sandy Shore

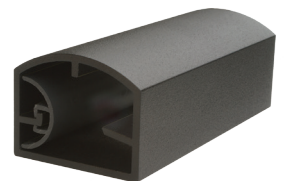


Silver

## Style C80



C80 VertiCable



Top Rail Profile

Colors shown are for representation only. Please consult actual samples for accurate powder coating colors.

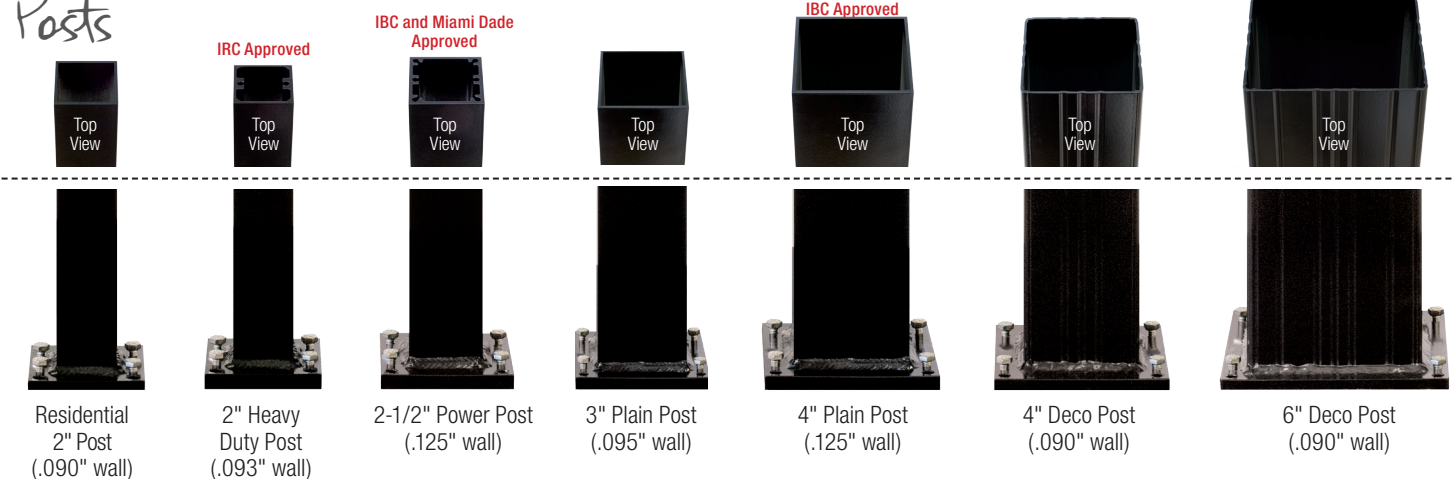


# Options & Accessories

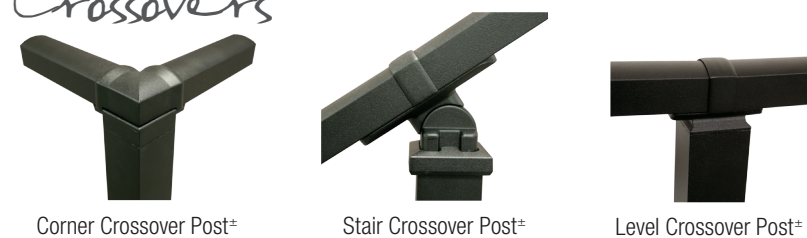


Westbury® Accessories add the finishing touch to your masterpiece. Available in 12 standard AAMA 2604 compliant powder coated colors.

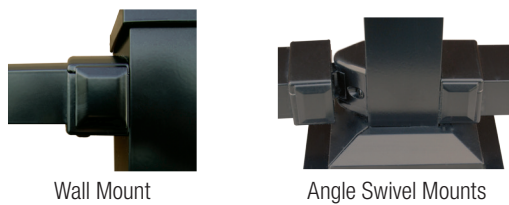
## Posts



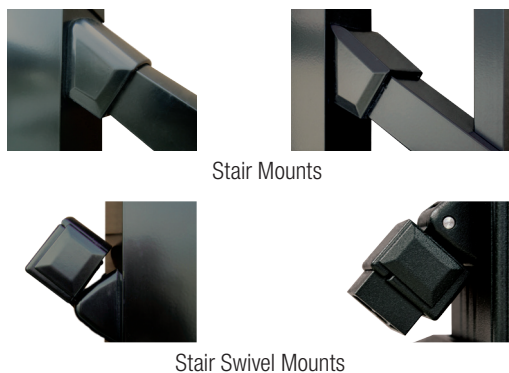
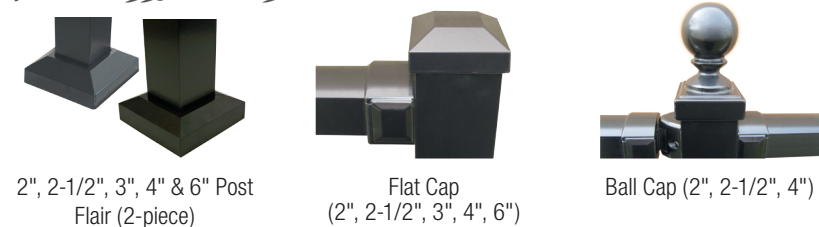
## Crossovers



## Mounts



## Accessories



## Magenta Star Lights



## Drink Rail

Drink Rail adapts to all Westbury® C Series designs. Pre-drilled and ready to install, Drink Rail mounts sturdily and is ready for your wood or composite material to be attached (not included).



The Continuous Handrail (CHR) is compatible with all Westbury® Railing and is ADA Compliant. A variety of rail lengths and accessories complete this system. Available in 12 standard AAMA 2604 colors.

