

# Nantucket® Collection Expansion



**Douglas Fir  
&  
Sapele Mahogany  
NOW IN STOCK!**

**LIFE | GOES THROUGH IT™**

## EXPANDING ON A TRADITION OF BEAUTY AND DURABILITY

### Unbeatable Construction

- Mortise-and-tenon joinery with face-driven pins
- 2-piece laminated stile-and-rail construction
- Divided light doors made with SDL construction
- Design pressure ratings of DP50 (additional hardware may be required in some applications)

### Wood Species Options

- Available in Douglas Fir, Sapele Mahogany, Nootka Cypress and Black Locust
- Tenon and face pins always made of Black Locust

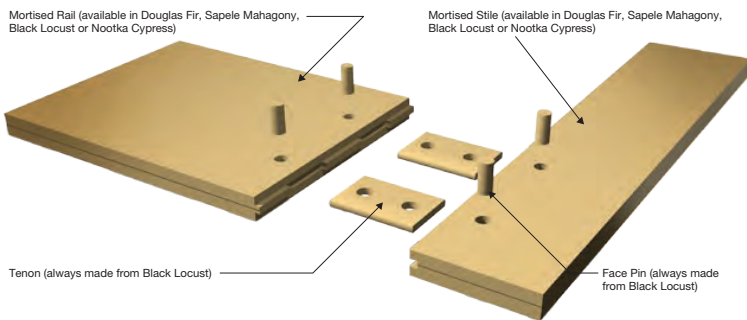
### Design Options

- Thickness - 1¾"
- Sticking Profiles - Shaker or Ovolo
- Panel Options - 1⅞" Innerbond® double hip-raised or ¾" solid flat

### Nantucket Collection Extended Warranty

- 10-year warranty on doors made from Sapele Mahogany, Nootka Cypress, Black Locust
- 5-year warranty on doors made from Douglas Fir
- No building overhang required, refer to "High Exposure" finishing recommendations for best performance.

## A BETTER DOOR FOR ANY CLIMATE



Most Innovative  
DOOR OF THE YEAR

## AVAILABLE WOOD SPECIES



Douglas Fir

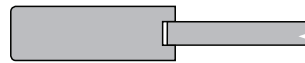
Sapele Mahogany

Nootka Cypress

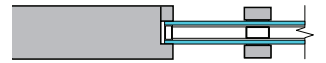
Black Locust

## PROFILE OPTIONS

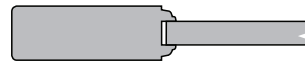
Shaker with ¾" Flat Panel



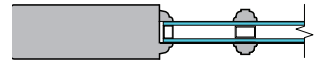
Shaker SDL Construction



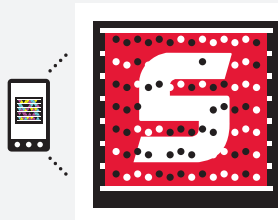
Ovolo with ¾" Flat Panel



Ovolo SDL Construction



Ovolo with 1⅞" Innerbond®  
Double Hip-Raised Panel



Learn more about Simpson products using your smartphone.

Get the free mobile app at <http://gettag.mobi>

**Simpson®**  
Door Company

1.800.SIMPSON | [simpsondoor.com](http://simpsondoor.com)



**PERFORMANCE SERIES®**  
TOUGH WOOD DOORS FOR TOUGH EXPOSURES

# UltraBlock® Technology



## What is UltraBlock® Technology?

A long time favorite of Simpson's most discriminating customers, UltraBlock technology integrates a composite block into the bottom of the stiles, where water infiltration can occur. Our exclusive Weather Seal™ process provides additional protection against moisture penetrating the bottom of the door. It's our answer to the galoshes you splashed around in as a kid.

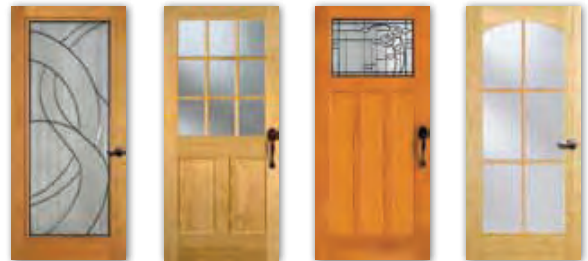
### Proven Protection For Your Door

- » Composite block material finger-jointed into the bottom of the stiles eliminates water infiltration
- » Minimizes stile and rail separation
- » Eliminates bottom rail and lower stile decay
- » Reduces buckling and swelling of bottom rail and lower stile components
- » Improves warp resistance
- » 5-year limited warranty

### Flexible Design Options

- » UltraBlock can be used in any door 1¾" thick
- » Protect all your exterior doors including entry, side and patio
- » Can be used with any wood species

Available for any 1¾" thick door



Pamplona®  
6420 in Cherry

7944 in  
Ponderosa Pine

Four Square®  
6971 in Fir

7056 in Bamboo

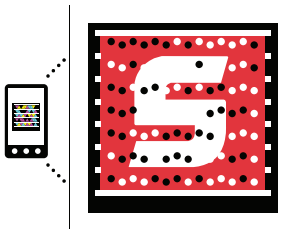


Queen Anne®  
4608 in Oak

Scarborough®  
6316 in  
Sapele Mahogany

Full Bloom®  
4612 in Fir

7130 in Fir



Learn more about Simpson products using your smartphone.

Get the free mobile app at <http://gettag.mobi>

